

Full Length Research Paper

Using OK and IDW methods for prediction the spatial variability of a horizon depth and OM in soils of Shahrekord, Iran.

Abbas Almasi^{1*}, Ahmad Jalalian², Norair Toomanian³

¹PhD Student, Azad Islamic University, Khorasgan branch, Iran

²Soil professor, Azad Islamic University, Khorasgan branch, Iran

³Assistant professor, Soil Science, Isfahan Agricultural Research Center, Isfahan, Iran

Accepted 31 July, 2014

This study attempts to evaluate some interpolation techniques for mapping spatial distribution of A horizon depth and OM in Shahrekord, Iran. 15000 hectares of South West Shahrekord soils were studied in which a total of 92 soil profiles were excavated and classified according to USDA. The performance of methods was evaluated by RMSE, ME and R^2 . Calculated RMSE for depth of A horizon were 0.01074, 0.19670 and 0.19858, respectively by IDW and OK (with Spherical and Exponential models). The RMSE for surface horizon OM were 0.05593, 0.12121 and 0.05078, respectively by IDW and OK (with Spherical and Exponential models). The results showed that IDW could estimate the variability of A horizon depth and OK (with Exponential semi-variogram) could estimate the variability of depth of A horizon better than other methods. The weakness of kriging prediction of spatial continuity of depth of A horizon is due to effects of variability of soil forming factors in evolution of soils evolved in different land forms of study area which could take out the stationary assumptions.

Key Words: Ordinary Kriging, Inverse Distance Weighting, Evaluation of models

INTRODUCTION

Soils are characterized by high degree of spatial variability due to the combined effect of physical, chemical and biological processes that operate with different intensities and at different scales (Goovaerts 1999). Knowledge on spatial variation of soil properties is important in several disciplines, including agricultural field trial research and precision farming. Reports have shown that there is large variability in soil, crop, disease, weed and yield not only in large-sized fields (Goovaerts 1999; Corwin 2003), but also in small-sized fields (Godwin and Miller 2003). In recent years, geostatistics has been proven to effectively assess the variability of soil properties (Webster, 1994; Zhang et al., 1998; Zhang et al., 2000; Webster and Oliver, 2001; Corwin et al., 2003; Mueller et al., 2003; Sun et al., 2009).

Geostatistics provides a set of statistical tools for analyzing spatial variability and spatial interpolation.

These techniques produce not only prediction surfaces but also error or uncertainty surfaces. Spatial prediction techniques, also known as spatial interpolation techniques, differ from classical modeling approaches by the way they incorporate information on the geographic position of the sample data points (Cressie 1993). The most common interpolation techniques calculate the estimate for a property at any given location by a weighted average of nearby data. A number of factors affect map quality including the nature of the soil variability (Salder et al. 1998), intensity of sampling and methods of interpolation. Availability of a variety of interpolation methods has posed questions to the users as to which is the most appropriate method in different contexts and has stimulated several comparative studies of relative accuracy.

Among statistical methods, geostatistical kriging-based techniques (Deutsch 2002) are widely applied and among deterministic interpolation methods, inverse distance weighting (IDW) method (Nalder and Wein 1998) is most often applied. Both models estimate values at un-

*Corresponding authors: E-mail: almasi549@yahoo.com

sampled locations based on the measurement at surrounding locations with certain assigned weights for each measurement. A stochastic (also called geostatistical) interpolator incorporates the concept of randomness and yields both an estimated value (the deterministic part) and an associated error (the stochastic part, e.g. an estimated variance). On the other hand, a deterministic method does not provide any assessment of the error made on the interpolated value.

Kriging is a collection of linear regression techniques that takes into account the stochastic dependence among data (Olea 1991). Ordinary Kriging (OK) is one of the most basic kriging methods. It provides an estimate at an unobserved location of variable z , based on the weighted average of adjacent observed sites within a given area. The correlations among neighboring values are modeled as a function of the geographic distance between the points across the study area, defined by a variogram (Miller et al. 2007).

A semivariogram is used to describe the structure of spatial variability. The semivariogram plays a central role in the analysis of geostatistical data using the kriging method. It takes into account the spatial autocorrelation in data to create mathematical models of spatial correlation structures commonly expressed by variograms.

The IDW procedure has been used primarily because it is simple and quick while kriging has been used because it provides best linear unbiased estimates. Many researchers have compared IDW and kriging. In some cases, the performance of kriging was generally better than IDW (Hosseini et al. 1994; Kravchenko and Bullock 1999; Kravchenko 2003; Reinstorf et al. 2005). One study found that by better resolving the spatial structure with additional closely spaced samples, ordinary kriging generally outperformed IDW (Mueller et al., 2001). In a simulation study (Kravchenko, 2003), IDW was compared with kriging with known (i.e., semivariogram models were determined from an exhaustive dataset) and unknown (i.e., semivariogram models were determined from the sample dataset) spatial structure.

As might be expected, the performance of kriging improved relative to IDW when the spatial structure was known. Given the importance of the spatial structure, it may be possible to use geostatistical indices to predict the relative performance of ordinary kriging and IDW. Taghizadeh Mehrjardi et al., (2008) in Ardakan-Yazd plain of Iran applied the Inverse Distance Weighted (IDW), kriging and cokriging methods for predicting spatial distribution of some groundwater characteristics such as: EC, SAR, Cl^- and SO_4^{2-} . Results showed that kriging and cokriging methods are superior to IDW.

The cokriging has higher accuracy than other methods for estimating spatial distribution of groundwater quality. Gotway et al (1996) have studied the relationships between OK and IDW for mapping soil nitrate (NO_3^-) and Organic matter content for variable-rate fertilizer

applications in corn production on Midwest soils. They found that OK provided reasonably accurate results in all cases. They also found that model accuracy was dependent upon the soil parameter being mapped. Kravchenko and Bullock (1999) conducted a comparative study of various interpolation methods for mapping soil test P and K data.

They found OK with the optimal number of neighboring points and an appropriate variogram performed better than IDW. In other studies, IDW generally out-performed kriging (Nalder and Wein 1998). Warrick (1998) reported kriging to be better than IDW for mapping potato yield and soil properties. Maroofi et al (2009) indicated that Inverse Distance was the best method to estimate EC and pH, respectively, in stream drained water in Hamedan-Bahar plain, west of Iran.

The results, however, have often been mixed (Schloeder et al. 2001; Mueller et al. 2001; Lapen and Hayhoe 2003). The results of prediction are mostly dependent of the site specific conditions in which the methods and models are used. The description of the environmental condition and the studied area ecological set may define the priority of methods being used.

The aim of this study is:

- Provide the continuous maps of depth of A horizon and OM amount by OK and IDW methods by 30*30 meter grids.
- Determine the error and access to accuracy maps by OK and IDW methods.

MATERIALS AND METHODS

STUDY AREA

The study area is located in Chaharmahal e Bakhtiari province, in the Southwestern of Shahrekord city between 32° 07' and 32° 20' north latitude and 50° 42' and 50° 52' east longitude containing 15000 hectares of area (Figure 1). Soil moisture and temperature regimes of study area are Xeric and Mesic, respectively. The slope of the area decreases moving from west to east in this area. The altitude varies between 2000 to 3500 meter. According to De-Martine advanced climatic classification system, this area has Mediterranean climatic class.

Data Sampling and Analysis

Geomorphic units of the study area were extracted by interpretation of 1:55000 aerial photos. Soil profiles (92 points) were randomly located in different geomorphic units in 2013. The soils of study area, are classified as Inceptisols and Alfisols according to USDA. These soils were positioned on the Hill, Piedmont, Alluvial Plain and Alluvial fan geomorphic units. The distribution of sampled points is shown in Figure 2. Size of circles in sampling

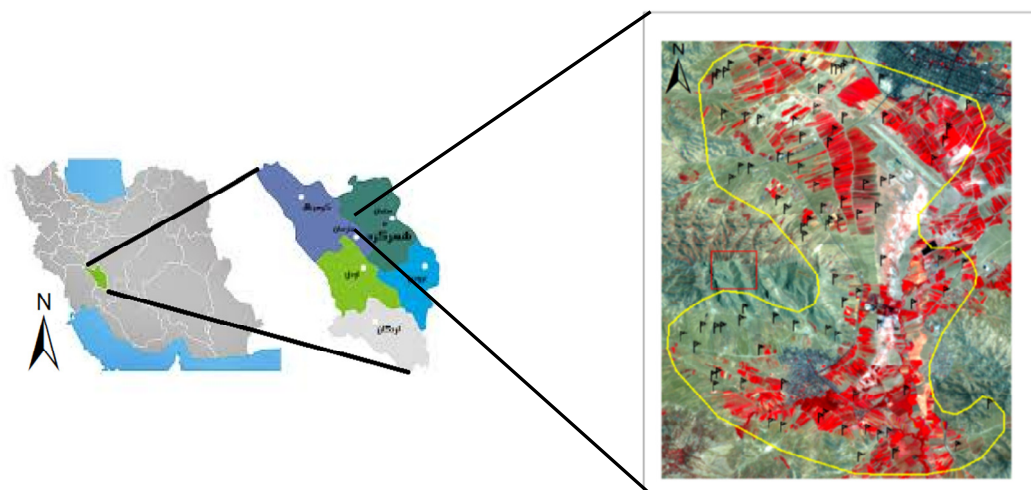


Figure 1: Location of the study area and sampling points in study area.

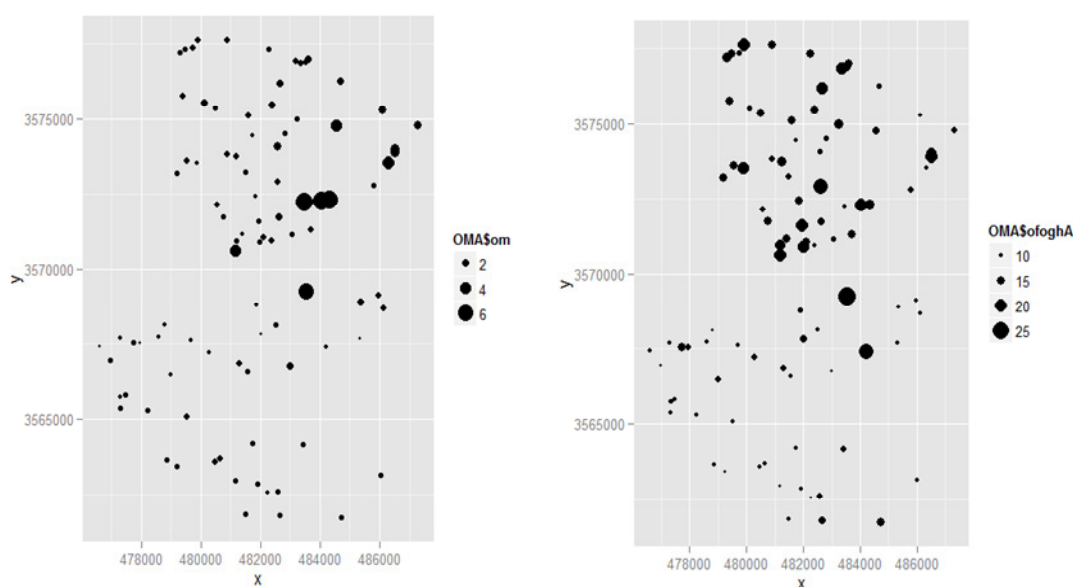


Figure 2: amount of two variables distributed in study area

points indicates the depth of A horizon and OM amount of surface horizon in mentioned figure. The bigger the circles the ticker the A horizon and higher the OM amounts. Figure 3 show three dimensional scatterplot of the amount of two variables measured in sampled points. The first and second dimensions were showed latitude and longitude and third dimension shows the depth of A horizon and/or OM amount of surface horizon. After morphological study, samples were taken from identified horizons and air-dried to remove stones and coarse crop residues. Soil texture, amount of organic carbon, CaCO_3 , pH, EC and CEC were analytically measured in sampled soils.

IDW

All interpolation methods have been developed based on the theory that closer points have higher correlation and similarities than those farther away. In the IDW method, it is assumed that the rate of correlations and similarities between neighbors is proportional to the distance between them. It is assumed that this correlation can be defined as a reverse distance function of every point from neighboring points. The definition of the neighboring radius and the related power to the reverse distance function are considered as important factors. The main factor affecting the accuracy of the IDW interpolator is the

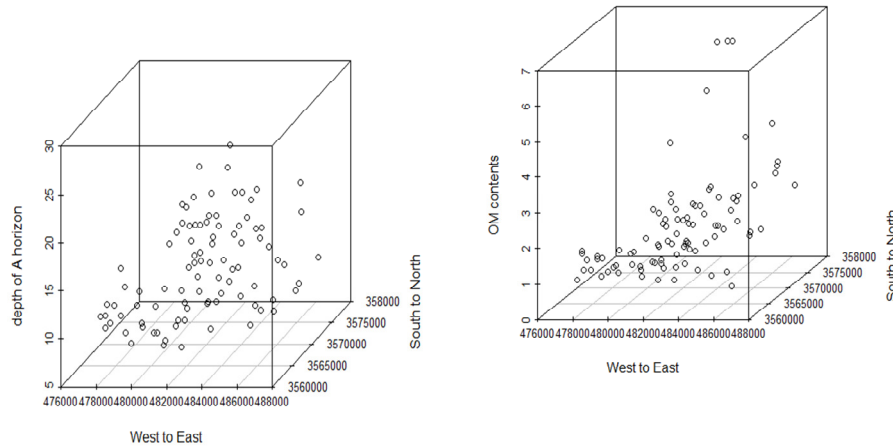


Figure 3: Three dimensional scatterplot of depth of A horizon and OM amount in the study area.

value of the power parameter p (Isaak and Srivastava, 1989).

Kriging

Kriging is a spatial prediction technique initially created in the early 1950's by mining engineer Daniel G. Krige (Krige 1951) with the intent of improving ore reserve estimation in South Africa. But it was essentially the mathematician and geologist Georges Matheron who put Krige's work a firm theoretical basis and developed most of the modern Kriging formalism (Matheron 1962, 1963). Following Matheron's work, the method has spread from mining to disciplines such as hydrology, meteorology or medicine, which triggered the creation of several Kriging variants. It is thus more accurate to refer to Kriging as a family of spatial prediction techniques instead of a single method. It is also essential to understand that Kriging constitutes a general method of interpolation that is in principle applicable to any discipline, such as astronomy. Kriging takes into account the spatial correlation existing in the data. In fact, Kriging method is built on the underlying process of second-order stationarity called intrinsic stationarity. Over the years about a dozen Kriging variants have been developed. We will concentrate here on Ordinary Kriging (OK), which is, by far, the most widely used. Ordinary Kriging is a local, exact and stochastic method. The set of $Z(x)$ is assumed to be an intrinsically stationary random process of the form (Hengl 2007)

$$Z(x) = m + \varepsilon(x) \quad (1)$$

The quantity $\varepsilon(x)$ is a random component drawn from a probability distribution with mean zero and variogram $\gamma(h)$ given by (6). The ordinary Kriging predictor is given by the weighted sum

$$\hat{Z}(x_0) = \sum_{i=1}^N \lambda_i Z(x_i) \quad (2)$$

where the weights λ_i are obtained by minimizing the so-called Kriging variance

$$\delta^2(x_0) = \text{Var}[\hat{Z}(x_0) - Z(x_0)] = E\{[\hat{Z}(x_0) - Z(x_0)]^2\} \quad (3)$$

subject to the un-bias-ness condition

$$E[\hat{Z}(x_0) - Z(x_0)] = 0 = \sum_{i=1}^N \lambda_i E[Z(x_i)] - m \quad (4)$$

The resulting system of " $N + 1$ " equations in $N + 1$ unknowns λ_i is known as the ordinary Kriging equations. It is often expressed in matrix form as $A\lambda = b$ with

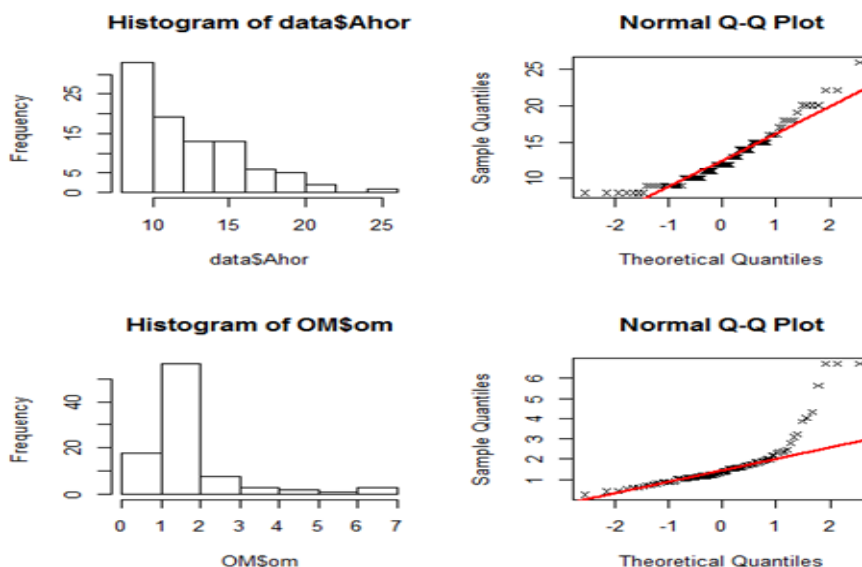
$$A = \begin{bmatrix} \gamma(x_1, x_1) & \gamma(x_1, x_2) & \cdots & \gamma(x_1, x_N) & 1 \\ \gamma(x_2, x_1) & \gamma(x_2, x_2) & \cdots & \gamma(x_2, x_N) & 1 \\ \vdots & \vdots & & \vdots & \vdots \\ \gamma(x_N, x_1) & \gamma(x_N, x_2) & \cdots & \gamma(x_N, x_N) & 1 \\ 1 & 1 & & 1 & 0 \end{bmatrix} \quad (5)$$

Most of the strengths of Kriging interpolation stem from the use of semivariance instead of pure geometrical distances. This feature allows Kriging to remain efficient in condition of sparse data and to be less affected by clustering and screening effects than other methods. In addition, as a true stochastic method, Kriging interpolation provides a way of directly quantifying the uncertainty in its predictions in the form of the Kriging variance specified in Eq. (3).

In this research, we used OK and IDW methods for production of continuous maps of depth of A horizon and

Table 1. The statistical values of soil properties

Soil properties	mean	Min	Max	Median	SD	Skewness	Kurtosis
A horizon (Cm)	12.75	8	26	12	0.281	0.21	1.15
OM amount (%)	1.705	0.265	6.723	1.388	0.281	0.16	1.45

**Figure 4:** Histogram and qq-plot of raw depth of A horizon and OM amount of surface horizon.

OM amount. For kriging method selected two semivariograms models that were Exponential and Spherical models.

Model Validation

Essentially, whenever we fit a model, we generate some predictions. The question one needs to ask is how good are those predictions? Generally, we confront this question by comparing observed values with their corresponding predictions. Some of the more common "quality" measures are the root mean square error (RMSE), bias, coefficient of determination or commonly the R^2

R overview and history

R is a software system for computations and graphics. R was originally developed in 1992 by Ross Ihaka and Robert Gentleman at the University of Auckland (New Zealand). The R language is a dialect of the S language which was developed by John Chambers at Bell Laboratories. This software is currently maintained by the R Development Core Team, which consists of more than

a dozen people, and includes Ihaka, Gentleman, and Chambers. Additionally, many other people have contributed code to R since it was first released. The source code for R is available under the GNU General Public Licence, meaning that users can modify, copy, and redistribute the software or derivatives, as long as the modified source code is made available. R is regularly updated; however, changes are usually not major. We have used R program to execute the needed analysis of this study. To do so thesp, raster, rgdal, ggplot2, gstat and MASS packages were used.

Results and Discussion

Table 1 lists the summary statistics of the raw data of depth of A horizon and OM in surface soil horizon, including mean, maximum, minimum, standard deviation, skewness, and kurtosis. To evaluate the normality of data a formal Anderson-Darling statistic test was executed. For this data to be normally distributed the p value should be less than 0.05, but p-value for raw depth of A horizon and OM amount of surface horizon data were 1.671e-05 and 2.2e-16, respectively. This is confirmed when we looked at the histogram and qq-plot of this data (figure 4).

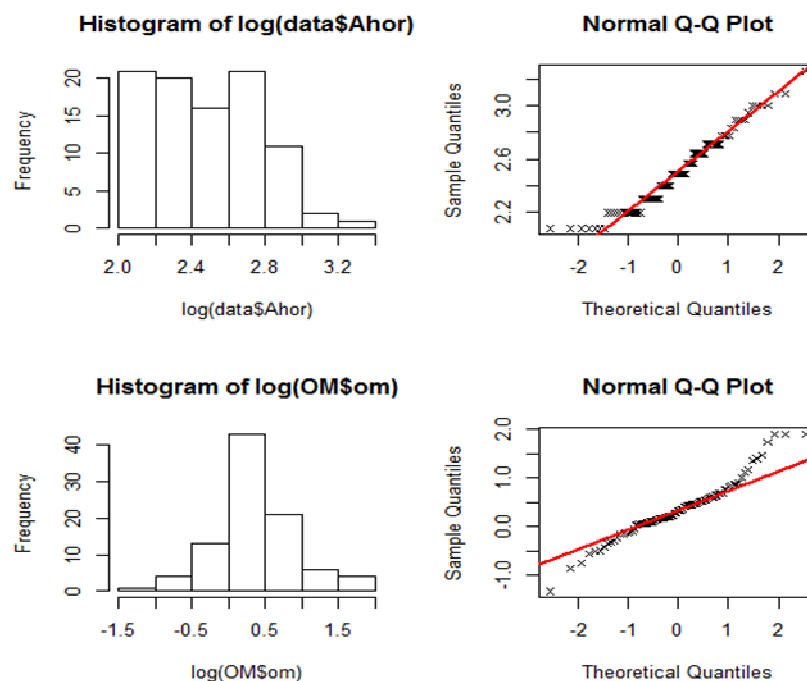


Figure 5. Histogram and qq-plot of transformed depth of A horizon and OM surface horizon data.

Table 2. The fitted semivariogram models and their parameters for study data.

Soil properties	Model	Nugget	Sill	Nugget/Sill	Range
Depth of A horizon	Exponential	0.03660527	0.10779205	0.339	21600
	Spherical	0.04044522	0.19931629	0.2025	25798
Content of OM	Exponential	0.007327816	0.339185062	0.021	1250.531
	Spherical	0.03672733	0.28606525	0.128	2749.347

Generally for fitting statistical models, we need to assume our data is normally distributed. Currently it is not, so we have to transform the data. A log-transformation is popular to convert the abnormal data to normal ones. The Log-Transformation resulted in reduced skewness and kurtosis values to 0.1, 1.084 for depth of A horizon and 0.027, 1.33 for OM surface horizon, respectively. Anderson-Darling Test statistic for transformed data had p-value less than 0.05. While not perfect, this is an improvement. This was also apparent when we viewed the histograms and qq-plots (figure 5).

Kriging method executed with Spherical and Exponential semivariograms and IDW model were performed on data and compared the two OK models with each other and IDW. The attributes of the semivariograms for the data are summarized in Table 2. Preliminary calculations of variograms in different directions showed that all semivariogram were isotropic.

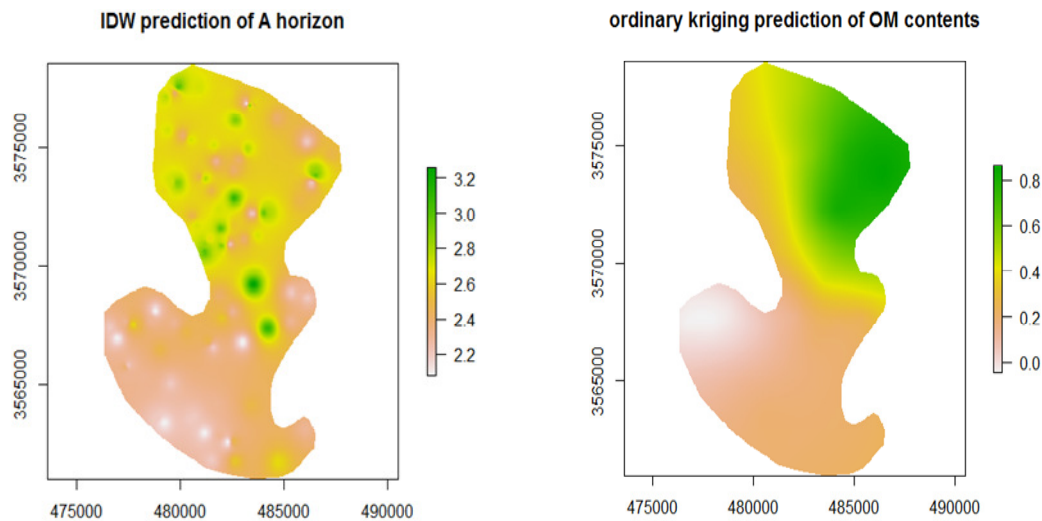
Semivariogram analysis indicated that depth of A horizon was best fitted to Spherical model with nugget, sill, and nugget/sill equal to 0.0404, 0.199 and 0.2025, respectively. For the amount of OM in surface horizon Exponential model was fitted the best with nugget, sill, and nugget/sill equal to 0.0073, 0.3391 and 0.021, respectively. In this research, nugget/sill ratio 20% and 2% for depth of A horizon (Spherical model) and OM surface horizon (Exponential model), respectively indicated well spatial dependence for the data in study area (table 2). The nugget/sill ratio of depth of A horizon (Exponential model) and OM surface horizon was 0.339 and 0.128, respectively. Commonly, weak spatial dependency can be recognized because of extrinsic factors such as industrial production, fertilization and other soil management practices. The anthropogenic factors may change the spatial correlation of the variables after a long process of utilization (Cambardella

Table 3. Results of validation analyses of depth of A horizon

Method	Model	RMSE	R ²	Bias
kriging	Exponential	0.1985871	0.5202948	0.0003598261
	Spherical	0.1967001	0.529896	0.0003599674
IDW	Power 2	0.01074181	0.9987832	0.0007679674

Table 4. Results of validation analyses of OM surface horizon.

Method	Model	RMSE	R ²	Bias
Kriging	Exponential	0.05078149	0.9933969	-1.0945e-05
	Spherical	0.1212131	0.9696227	-0.0016408
IDW	Power 2	0.05593931	0.9814762	-0.0013790

**Figure 6.** Interpolation maps of OM produced by kriging (Exponential model) and A horizon by IDW methods.

et al., 1994; Shi et al., 2007). In this research, Exponential model could estimate the distribution of A horizon depth and Spherical model estimated amount of OM more better.

The results of geostatistical analyses of depth of A horizon and OM of surface horizon have been presented in Tables 3 and 4. The results showed that IDW and kriging (Exponential model) were the best methods to estimate depth of A horizon and OM of surface horizon, respectively, because they had the highest precision and lowest error for estimation of these elements (tables 3 and 4). The performance of kriging (Spherical and Exponential) and IDW methods have been compared by cross-validation. According to the resulted cross-validation parameters, generally two models performed fairly well but IDW was the best model to estimate the depth of soil A horizons and Kriging with exponential

variogram was the best model to estimate the amount of OM in soil surface horizons (tables 3 and 4).

In order to visually understand the difference of spatial variation resulted by the best models for the depth of A horizons and OM of surface horizons, maps provided by kriging (Exponential models) and IDW methods for study area are shown in figure 6. The results showed the high dependence of these parameters on slope. These parameters are higher in the northern, less slope, than in the south and west.

Webster and Englung (1992) findings are in agreement with our results in which these researchers reported that IDW was the best method for estimated soil properties. Spatial interpolation techniques such as kriging utilize the co-regionalization structure of soil properties and so provide unbiased estimates and minimum variance (Ali and Malik, 2011). Generally, geostatistics is superior to

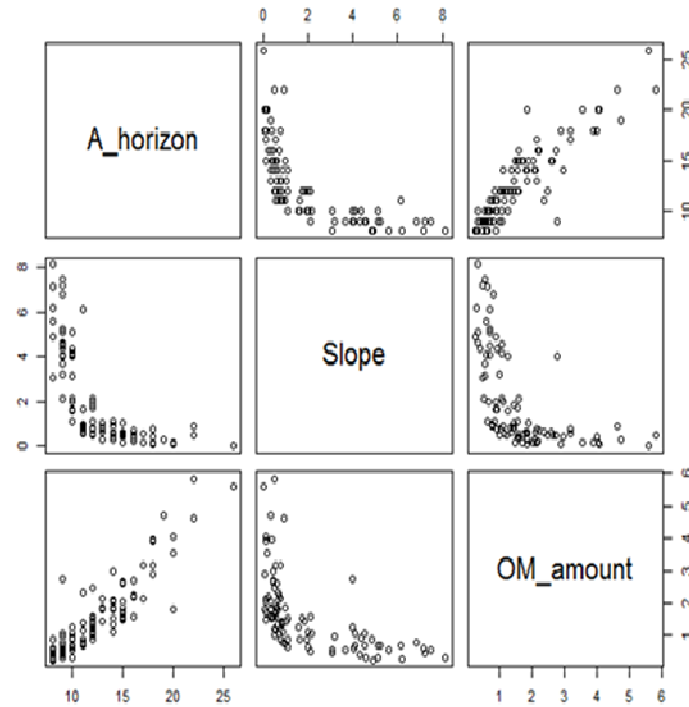


Figure 7: A pairs plot of A horizon, slope and OM amount from the study area.

IDW which is similar to the results of Ahmad (2002), Barca and Passarella (2007), Mashayekhi et al., (2007); Liu et al., (2004) and Ali and Malik (2011) but our study resulted that it would not be a global rule and the estimation may be affected by the environmental condition of local area.

Spatial patterns of data estimated by kriging show the high dependence of parameters on slope and geomorphic units. Slope is associated with these results, because, there is a inverse slope gradient toward the north of study area, therefore the value of target variables are high. This is because the geomorphic units such as Alluvial plains are in the north but, high slope geomorphic units such as Pediment and Aluvial fan are positioned in the south of studied area. Not only correlations between depth of A horizon and OM surface horizon with slope and geomorphic units are high, but also correlation between OM surface horizon and clay content is also high (Figure 7). Due to the geologic and geomorphic set of study area, the realizations of the spatial variability of the target variables are more site dependent in this area. The amount of the OM surface horizon is completely dependent of land use map units.

The main superiority of kriging to the other methods such as IDW is the ability of kriging to present the estimation error map of each study. Another advantage of the kriging compared to other interpolation methods like IDW is that produced maps of kriging shows gradual

variation of the nature, while IDW method estimations are more point specific localities.

CONCLUSIONS

This study has shown that, out of the two spatial prediction methods, there is not a single interpolator enable to generate the best results for every attempt to map the soil properties. Therefore expecting the kriging to be always the better interpolator may be not be a true assumption. In all implementations of IDW the power of two was the best choice (over powers of one, three and four), which is possibly due to the relatively low skewness inherent in all soil properties modelled (as also found by Kravchenko and Bullock, 1999).

When the noise is low and spatial correlation is high it may generally be expected that kriging performs better than IDW but not in all other cases. However, as our results indicates, the expectation of kriging to perform better in case of amount of OM was true but for the depth of A horizon was false. Although our results are somewhat different from the results of Weber and Englund (1992), who found, to their surprise, that the accuracy of OK was not significantly affected by noise level. Possible explanations for this discrepancy is: the amounts of noise, as measured by the ratios of error variance to total variance, in our experimentis

considerably more disparate (roughly 20% and 27%) vs. 0% and 10% in the study of Weber and Englund).

Based on this research, geomorphological units and slope had a high correlation by depth of A horizon and OM amount. Hence, besides using interpolation methods, the data derived from DEM and satellite information can be used for other interpolation methods such as Cokriging and MLR as auxiliary variables in next studies.

REFERENCES

- Ahmed, S (2002). Groundwater monitoring network design: Application of geostatistics with a few case studies from a granitic aquifer in asemiarid region. In: Sherif MM (ed) Groundwater Hydrology. Balkema, Tokyo, Japan.2: 37-57.
- Ali SM, Malik RN (2011). Spatial distribution of metals in top soils of Islamabad city, Pakistan. *Environ Monit Assess* .172:1–16.
- Barca E, Passarella G (2007). Spatial evaluation of the risk of groundwater quality degradation. A comparison between disjunctive kriging and geostatistical simulation. *Environ Monit Assess*.137:261-73.
- Burrough P (1988). Principles of geographical information systems for land resources assessment, Monographs on soil and resources survey (Oxford University Press)
- Cambardella CA, Moorman TB, Novak JM, Parkin TB, Turco RF, Konopka AE (1994). Field-scale variability of soil properties in central Iowa soils. *Soil Sci Soc Am J* 58:1501–1511.
- Collins FC, Bolstad PV (1996). A Comparison of Spatial Interpolation Techniques in Temperature Estimation (USA: NCGIA - National Center for Geographic Information and Analysis)
- Corwin DL, Lesch SM (2003). Application of soil electrical conductivity to precision agriculture: Theory, principles and guidelines. *Agronomy Journal* 95, 455–471.
- Cressie C (1990). The origins of kriging. *Math Geol* 22:239–252.
- Deutsch CV (2002). Geostatistical Reservoir Modeling. Oxford University Press, NewYork 376 pp.
- Godwin RJ, Miller PCH (2003). A review of the technologies for mapping within-field variability. *Biosystems Engineering* 84,393- 407.
- Goovaerts P (1999). Geostatistics in soil science: state-of-the-art and perspectives. *Geoderma* 89, 1–45.
- Gotway CA, Ferguson RB, Hergert GW, Peterson TA (1996). Comparison of kriging and inversedistance methods for mapping soil parameters. *Soil Sci. Soc. Am. J.*, 60: 1237-1247.
- Hengl T (2007). A practical guide to geostatistical mapping of environmental variables. European Commission. P, 143.
- Hosseini E, Gallichand D, Marcotte D (1994). Theoretical and experimental performance of spatial interpolation methods for soil salinity analysis. *Transactions of the ASAE* 37:1799-1807.
- Isaaks EH, Srivastava RM (1989). An Introduction to Applied Geostatistics. Oxford University Press, New York, pp: 561.
- Kravchenko AN (2003). Influence of spatial structure on accuracy of interpolation methods. *Soil Sci. Soc. Am. J.* 67:1564–1571.
- Kravchenko A, DG Bullock (1999). A comparative study of interpolation methods for mapping soil properties. *Agron.J*.91: 393-400.
- Krige DG (1951). A statistical approach to some basic mine valuation problems on the Witwatersrand. *J Chemical, Metallurgical and Mining Soc. South Africa* 52:119– 139.
- Lapen DR, Hayhoe HN (2003). Spatial analysis of seasonal and annual temperature and precipitation normals in Southern Ontario, Canada. *J. Great Lakes Res.*, 29: 529-544.
- Liu XM, Xu JM, Zhang MK, Huang JH, Shi JC, Yu X (2004). Application of geostatistics and GIS technique to characterize spatial variabilities of bioavailable micronutrients in paddy soils. *Environ Geol* 46:189–194.
- Maroofi S, Toranjeyan A, ZareAbyaneh H (2009). Evaluation of geostatistical methods for estimating electrical conductivity and pH of stream drained water in Hamedan-Bahar Plain. *J Water and Soil Conser* 16: 169-187. (In Persian).
- Mashayekhi K, Asadi Z, MovahediNaeini SA, Hajrasuliha S (2007). Salinity regionalization with geostatistic method in a wet soil in southern Lenjan-Isfahan (Iran). *Indian J Agric Res* 41:1 -9.
- Matheron G (1962). *Trait'e de g'eostatistique appliqu'ee*. Vol. 14 of M'emoires du Bureau de Recherches G'eologiques et Mini'eres. Editions Technip, Paris, p. NA.
- Matheron G (1969). *Le krigeage universel*. Vol. 1. Cahiers du Centre de Morphologie Math'ematique, ' Ecole des Mines de Paris, Fontainebleau, p. NA.
- Miller J, Franklin J, Aspinall R (2007). Incorporating spatial dependence in predictive vegetation models. *Ecol. Modell.*, 202: 3(4), 225–242.
- Mueller TG, Hartssock NJ, Stombaugh TS, Shearer SA, Cornelius PL, Barnhise RI (2003). Soil electrical conductivity map variability in limestone soil overlain by loess. *Agron J* 95:496–507.
- Mueller TG, FJ Pierce, O Schabenberger, DD Warncke (2001). Map quality for site-specific fertility management. *Soil Sci. Soc. Am. J.*, 65: 1547-1558.
- Nalder IA, Wein RW (1998). Spatial interpolation of climatic normals: Test of a new method in the Canadian boreal forest. *Agricultural Forecasting and Meteorology*. 92, 211-430.
- Olea RA (1991). Geostatistical glossary and multilingual directionary, Oxford University Press, NewYork.
- Reinstrof F, Binder M, Schirmer, Grim-Strele J, Walther W (2005). Comparative assessment of regionalization methods of monitored atmospheric deposition loads. *Atmospheric Environment* 39, 3661-3674.
- Weber DD, Englund EJ (1992). Evaluation and comparison of spatial interpolators. *Mathematical Geology* 24,381–391.
- Salder EJ, Busscher WJ, Baur PJ, Karlen DL (1998). Spatial scale requirements for precision farming: A case study in the southeastern USA. *Agronomy Journal* 90, 191-197.
- Schloeder CA (2001). Comparison of methods for interpolating soil properties using limited data. *Soil Sci. Soc. Am. J.* 65:470–479.
- Shi J, Wang H, Xu J, Wu J, Liu X, Zhu H, Yu C (2007). Spatial distribution of heavy metals in soils: a case study of Changxing China. *Environ Geol* 52:1–10.
- Sun YX, Wu CZ, Zhu K, Cui Z, Chen X, Zhang F (2009). Influence of interpolation method and sampling number on spatial prediction accuracy of soil Olsen-P. *Chinese J Applied Ecol* 20:673-678.
- Webster R, Oliver MA (2001). *Geostatistics for environmental scientists*. Wiley, New York.
- Webster R (1994). The development of Pedometrics. *Geoderma* 62:1–15.
- Zhang CS, Selinus O, Wong P (2000). Spatial structures of cobalt, lead, and zinc contents in tills in southeastern Sweden. *GFF (Transactions of the Geological Society in Stockholm)* 122. 2:213–217.
- Zhang CS, Selinus O, Schedin J (1998). Statistical analyses on heavy metal contents in till and root samples in an area of southeastern Sweden. *Sci Total Environ* 212: 217– 232.